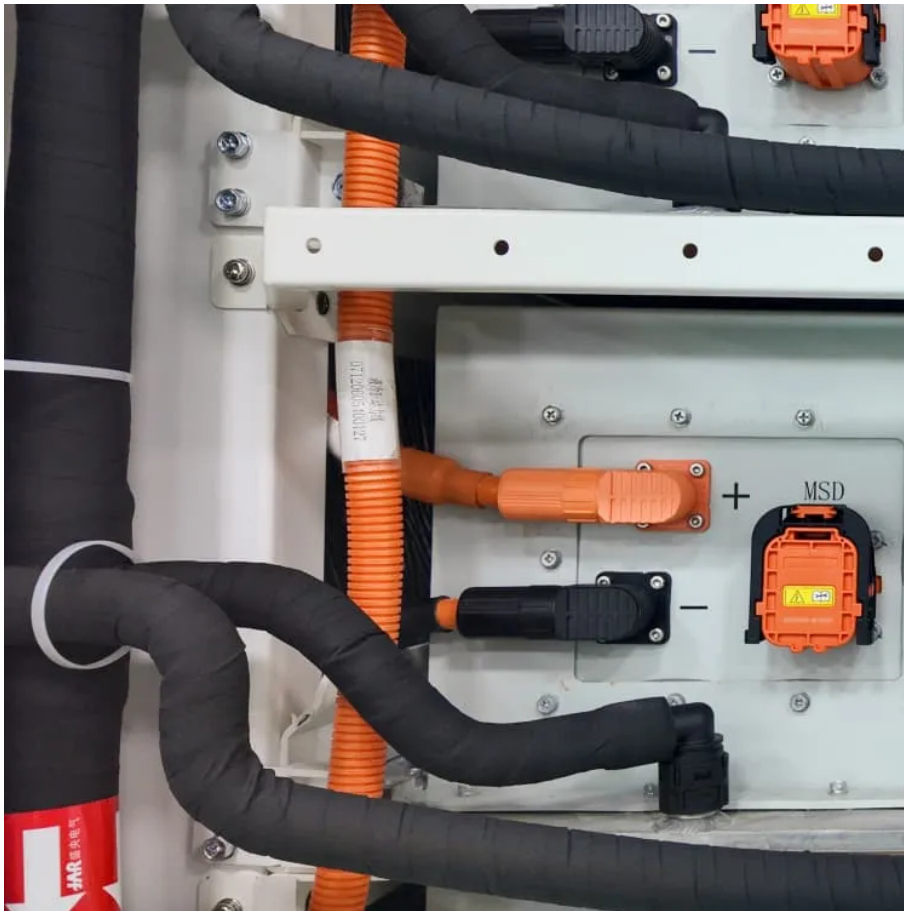


Three-phase inverter 1





Overview

What is the difference between a single phase and a three phase inverter?

Single-phase inverters convert DC input into single-phase output. The output consists of one phase (A- N, B- N, or C- N), formed by one live and one neutral conductor, with a standard voltage of 220 V — mainly for residential use. Three-phase inverters convert DC power into three-phase supply, generating three equally spaced AC phases.

How many switches are in a three phase inverter?

The three-phase inverter consists of six switches, typically arranged in a bridge configuration, and each phase is connected to a load as shown in Figure 1. The switching patterns and timing of the switches determine the shape, magnitude, and frequency of the output voltage. 1. Three Phase 180° Mode Voltage Source Inverter.

What is a 3-phase AC inverter?

This conversion is achieved through a power semiconductor switching topology. In this topology, gate signals are applied at 60-degree intervals to the power switches, creating the required 3-phase AC signal. This type of inverter is commonly employed in conjunction with photovoltaic (PV) modules or the grid.

What is a 3 phase square wave inverter?

A three-phase square wave inverter is used in a UPS circuit and a low-cost solid-state frequency charger circuit. Thus, this is all about an overview of a three-phase inverter, working principle, design or circuit diagram, conduction modes, and its applications. A 3 phase inverter is used to convert a DC i/p into an AC output.



Three-phase inverter 1

3-Phase Inverter

Feb 27, 2024 · Three Phase Inverter A three phase inverter is a device that converts dc source into three phase ac output . This conversion is achieved through a power semiconductor ...

Single Phase vs Three Phase Inverters: What's the Difference ...

Jun 16, 2025 · Learn the key differences between single-phase and three-phase solar inverters, including power capacity, voltage, grid compatibility, and use cases. Choose the right inverter ...

Three Phase VSI with 120° and 180° ...

Oct 27, 2024 · The three-phase inverter consists of six switches, typically arranged in a bridge configuration, and each phase is connected to a load ...

What is Three Phase Inverter and How Does It Work

Aug 1, 2025 · What is three phase inverter? That is a device that converts direct current (DC) power into alternating current (AC) in three separate phases. For better understanding this ...

Lecture 23: Three-Phase Inverters

Feb 24, 2025 · Lecture 23 - 3-phase inverters Prof. David Perreault Consider implementation of an inverter for 3-phase using three single-phase inverters (e.g. full-bridge or half-bridge), one ...

Three Phase VSI with 120° and 180° Conduction Mode

Oct 27, 2024 · The three-phase inverter consists of six switches, typically arranged in a bridge configuration, and each phase is connected to a load as shown in Figure 1. The switching ...

Single Phase vs Three Phase Inverters: What's ...

Jun 16, 2025 · Learn the key differences between single-phase and three-phase solar inverters, including power capacity, voltage, grid ...

Unlocking the Power: Single Phase to Three Phase Inverters ...

May 12, 2025 · What are the benefits of using a single-phase to three-phase inverter? Benefits include cost-effective solutions, enhanced equipment performance, versatility across ...

Three-Phase Inverters

For three-phase applications including motor drives, UPSs, and grid-tied solar inverters, the three-phase full-bridge inverter topology is a frequently used design.

Three Phase Inverter : Circuit, Working and Its ...

A three-phase inverter working principle is, it includes three inverter switches with single-phase where each switch can be connected to load terminal. ...



CHAPTER4

Dec 22, 2023 · 4.1 Introduction In this chapter the three-phase inverter and its functional operation are discussed. In order to realize the three-phase output from a circuit employing dc as the ...

Three Phase Inverter : Circuit, Working and Its Applications

A three-phase inverter working principle is, it includes three inverter switches with single-phase where each switch can be connected to load terminal. For the basic control system, the three ...

Three-phase inverter reference design for 200-480VAC ...

May 11, 2022 · Three-phase inverter reference design for 200-480 VAC drives with opto-emulated input gate drivers Description This reference design realizes a reinforced isolated three-phase ...

Contact Us

For technical specifications, project proposals, or partnership inquiries, please visit:

<https://www.flightmasters.eu>

Scan QR Code for More Information



<https://www.flightmasters.eu>