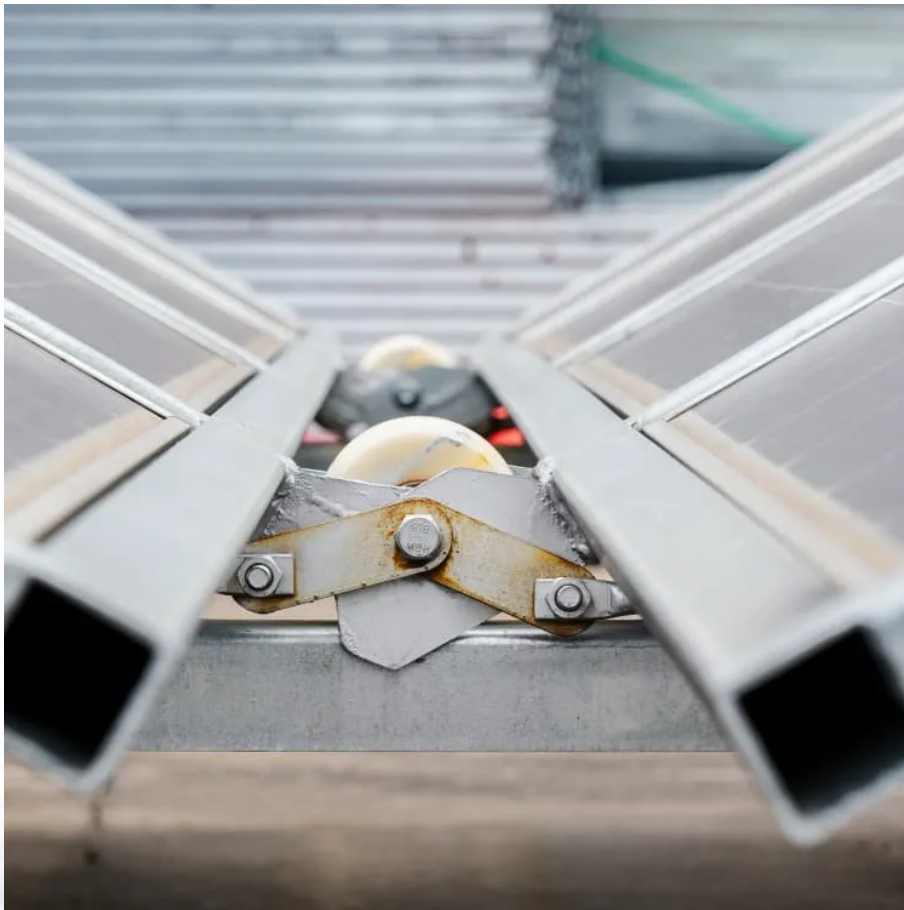


What are the functions of the base station communication link





Overview

A base station connects your phone to the network. It acts as a hub between mobile devices and the core system. Base stations form the backbone of 4G LTE and 5G networks. What is a base station in a telecommunications network?

A base station is a critical component in a telecommunications network. A fixed transceiver that acts as the central communication hub for one or more wireless mobile client devices. In the context of cellular networks, it facilitates wireless communication between mobile devices and the core network.

Why is a base station important in wireless communication?

A base station is fundamental in wireless communication, because it facilitates the connection between your device and the wider network. Without base stations, mobile data and voice services would be impossible, as there would be no infrastructure to handle the transmission of signals.

Why are base stations important?

Base stations are the backbone of wireless communication networks, playing a pivotal role in signal transmission, network reliability, and high-speed data connectivity. As technology evolves, the importance of base stations will continue to grow, addressing new challenges and supporting the ever-expanding demand for wireless communication services.

What is a base station and how does it work?

A base station is a fixed point of communication between mobile devices and the wider telecom network. It transmits and receives radio signals, enabling your phone to access voice, data, and internet services. Together, thousands of base stations form a seamless web of coverage known as a cellular network. How Does It Work?



What are the functions of the base station communication link

Base Station Controller: 5 Key Insights You Need to Know

Feb 24, 2025 · Base Station Controller: An Overview The base station controller (BSC) plays a critical role in mobile telecommunications. It manages the radio resources for one or more ...

What Does a Base Station Do and Why Is It Essential for ...

Sep 5, 2025 · A base station is a fixed point of communication between mobile devices and the wider telecom network. It transmits and receives radio signals, enabling your phone to access ...

Chapter 13: Data Links Functions, Attributes ...

Chapter 13: Data Links Functions, Attributes and Latency Student Learning Objectives The student will learn about the data-link function of the UAS ...

Understanding the Base Station Subsystem: A ...

Oct 4, 2024 · In the world of mobile telecommunications, understanding the Base Station Subsystem (BSS) is paramount for grasping how our everyday communications function ...

What is a Base Station? -- From Communication Core to ...

Aug 19, 2025 · Base stations are the core of mobile communication, and with the rise of 5G, thermal and energy challenges are increasing. This article explains the definition, structure, ...

Understanding Base Stations: The Backbone of Wireless Communication

Jan 6, 2025 · Base Station But what exactly is a base station, and how does it work in wireless communication networks? This article explores the concept of base stations, their functions, ...

What Is A Base Station?

Apr 22, 2024 · A base station is an integral component of wireless communication networks, serving as a central point that manages the transmission and reception of signals between ...

Base Station's Role in Wireless Communication Networks

The base station also performs the reverse function, converting digital data back into radio waves to send to your device, enabling consistent communication. Can base stations impact network ...

What Is the Role of a Base Station in Wireless Communication?

Jun 27, 2025 · Base stations are the backbone of wireless communication networks, playing a pivotal role in signal transmission, network reliability, and high-speed data connectivity. As ...

Base Stations

Jul 23, 2025 · The present-day tele-space is incomplete without the base stations as these constitute an important part of the modern-day scheme of wireless communications. They are ...



What is Base Station Controller? A Simple Guide for Everyone

Aug 19, 2025 · Power control is another key function, as the BSC adjusts signal strength to maintain optimal quality without wasting energy or causing unnecessary interference. Effective ...

What are the emergency communication functions of a TETRA Base Station

As a supplier of TETRA Base Stations, I'm super excited to dive into the emergency communication functions of these bad - boys. TETRA, which stands for Terrestrial Trunked ...

What is a Base Station in Telecommunications?

What is a Base Station? A base station is a critical component in a telecommunications network. A fixed transceiver that acts as the central communication hub for one or more wireless mobile ...

Contact Us

For technical specifications, project proposals, or partnership inquiries, please visit:

<https://www.flightmasters.eu>

Scan QR Code for More Information



<https://www.flightmasters.eu>